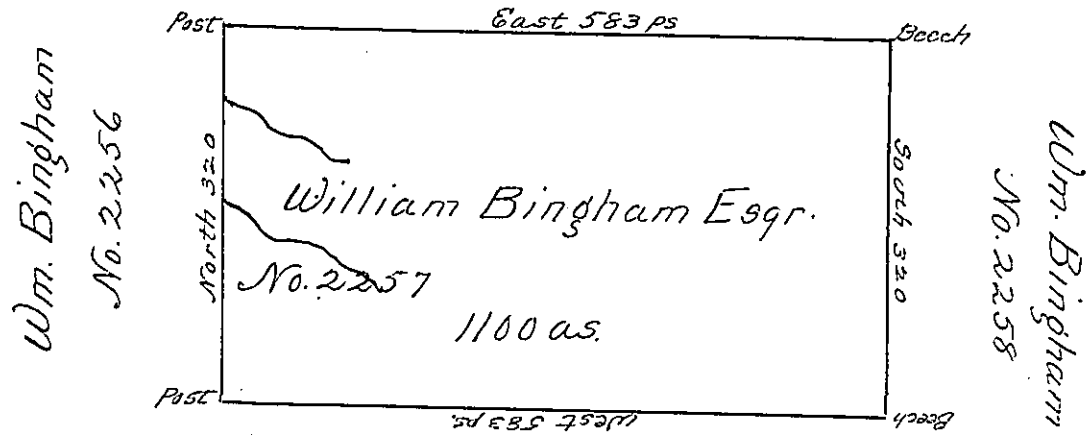


Wm. Bingham
No. 2264



Wm. Bingham
No. 2254

Situate on the Middle Branch of the ---
Joshuanawand Creek seven miles South of the
State Line in the last purchase - District No. 4
Surveyed July 3d. 1793 in pursuance of a Warrant
to William Bingham Esquire - No. 2257 Dated
the twelfth day of December 1792 for 1000 acres.
Containing Eleven hundred acres and the
usual allowance of Six percent for Roads &c.

By James Hunter Esq.
To Daniel Brodhead Esq. S.G.

July 3d.

IN TESTIMONY that the above is a copy of the original remaining on file in
the Department of Internal Affairs of Pennsylvania, made
conformably to an Act of Assembly approved the 16th day of
February, 1833, I have hereunto set my Hand and caused
the Seal of said Department to be affixed at Harrisburg,
this seventh day of October 1902

James W. Latta
Secretary of Internal Affairs.